



*Basic Directory Listing: \$80 per year\**

Domain Name ([www.yourbusiness.com](http://www.yourbusiness.com))

*Linked to your directory profile page (increase search rank)*

Business Name

Business Address (including city/zip)

Business Phone

Business Email

Business Website

Business Category (select multiple listings)

*Including NAICS Code*

Diversity Category (minority-owned)

Designation for Women-Owned Business

Links to Business [Facebook](#)/[Twitter](#) Account

Two directory profiles (USSmallBiz/KS or OK)

Geo-searching (search by keyword/location)

Create/manage online coupons (5 maximum)

Add/manage products/services listed

*Quick Add Listing: \$30 per year^*

*Premium Webpage, Domain name+*

*(if your business does not already have a website, we will create a webpage & provide domain name & hosting) - **\$120.00 per year***

**Benefits:**

*Competitively priced (One-of-a-kind Directory)*

*Reach potential customers by offering coupons*

*Helps customers, government/corporations find products*

*& services provided by local vendors.*

*Manage your own profile when you logging in*

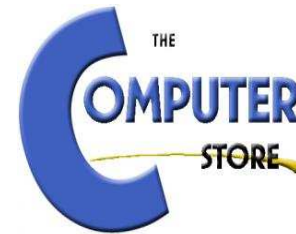


IBSA, Inc. makes no representations or warranties about listed businesses and is not responsible for policies and practices of sites that are linked to our online directory or its users. We encourage you to consult the policies available on those sites to further understand their offers, products, services or practices.

IBSA is an equal opportunity employer and does not discriminate on the basis of race, color, sex, religion, national origin, age, disability, political affiliation or belief.



*Support Your Local Small Business*



*and more...*

Advertising is an allowable tax-deductible business related expense. Consult with your tax preparer for advice on standard business deductions.

**Visit Us Online**

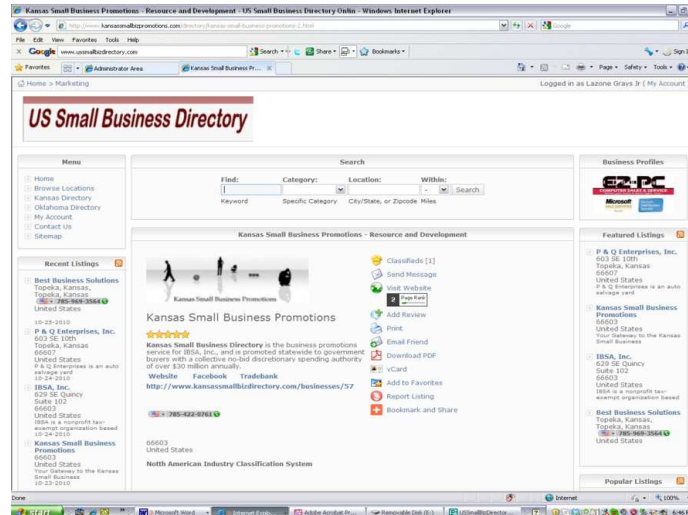
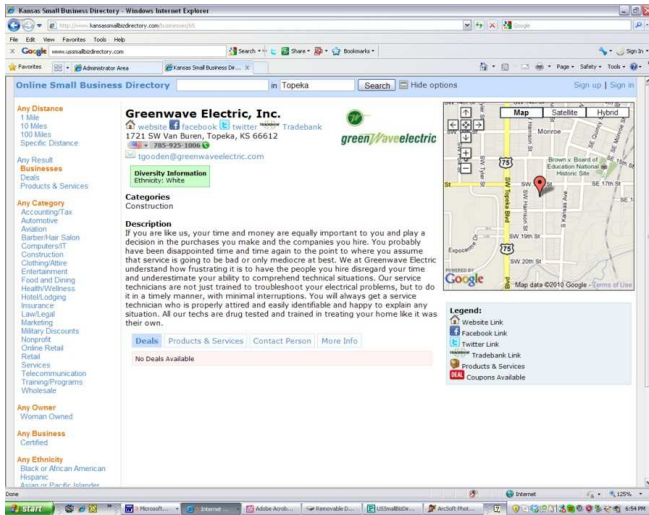
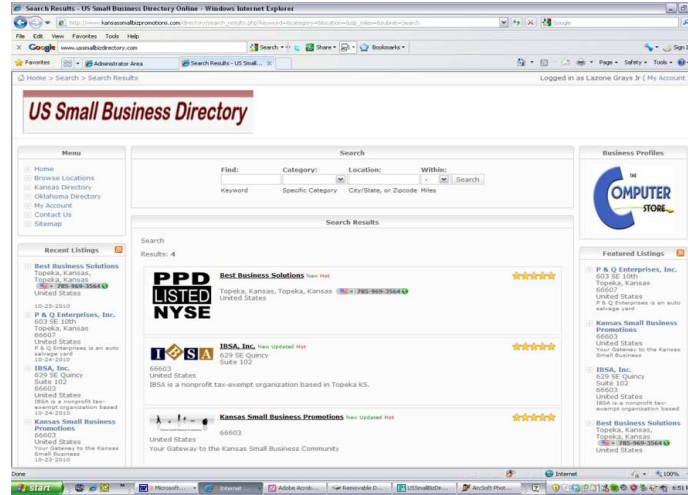
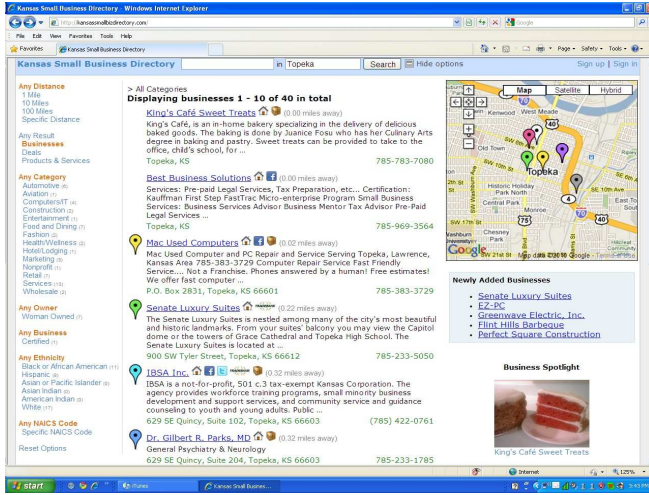
[www.KansasSmallBizDirectory.com](http://www.KansasSmallBizDirectory.com)

[www.USSmallBizDirectory.org](http://www.USSmallBizDirectory.org)

Email: [admin@ibsa-inc.org](mailto:admin@ibsa-inc.org)

Call for more info: (785) 422-0761

# Your Gateway to the Kansas Small Business Community



## Special Offer for Tradebank Members—T\$80 per year—Domain Not Included

When you add your Tradebank generated WebLink to your profile, receive \$10TD per month, making your listing virtually free and profitable! To purchase this service as a Tradebank member, email us your 16-digit Tradebank Card Number, we will process the sale, and then send you a confirmation link and basic instructions to complete your directory profile. Two profiles = \$20TD/mth



The **Kansas Small Business Directory** is a service provided by **IBSA, Inc.**, a tax-exempt nonprofit organization. Proceeds from business registrations are used to fund activities that support programs and services for startup or expanding small business ventures. One price will get your business listed in both directories. Thanks in advance for your support!!

Kansas Small Business Directory

## Owner Information

Name \_\_\_\_\_

Title \_\_\_\_\_ Employee# \_\_\_\_\_

## Business Information

Name \_\_\_\_\_

Address \_\_\_\_\_

City \_\_\_\_\_ Zip \_\_\_\_\_

Phone \_\_\_\_\_

Email \_\_\_\_\_

Web \_\_\_\_\_

Facebook \_\_\_\_\_ Twitter \_\_\_\_\_ Tradebank \_\_\_\_\_

Legal Structure: S-Corp \_\_\_\_\_ Corp \_\_\_\_\_ LLC \_\_\_\_\_

Partnership \_\_\_\_\_ Nonprofit \_\_\_\_\_ Sole Proprietor \_\_\_\_\_

NAICS Code \_\_\_\_\_

Category: Retail \_\_\_\_\_ Service \_\_\_\_\_ Nonprofit \_\_\_\_\_

Auto \_\_\_\_\_ Wholesale \_\_\_\_\_ Construction \_\_\_\_\_ Food \_\_\_\_\_

Manufacturing \_\_\_\_\_ Computers/IT \_\_\_\_\_ Fashion \_\_\_\_\_

Entertainment \_\_\_\_\_ Other \_\_\_\_\_ WBE \_\_\_\_\_ MBE \_\_\_\_\_

Sales Rep \_\_\_\_\_

[ ] \$80.00 per year\* [ ] \$120 per year+

*Basic listing plus domain name\**

*Premium webpage, domain name, basic listing+*

Pay online: [www.kansassmallbizdirectory.com](http://www.kansassmallbizdirectory.com),

click **Sign up** and provide the required information.

*(You will need to check your email to confirm your subscription in order to complete your profile).*

**\$30.00 per year: Quick Add [ ] ^ (Limited Features)**

**Complete and mail with payment to:**

**IBSA, Inc.**

**C/o Online Directory**

**629 SE Quincy, Suite 102**

**Topeka, KS 66603**